

Model WMC Miniature Sealed Stainless Steel Load Cell Capacities 5-500 lbf (22-2200N)

- Proprietary Interface temperature compensated strain gages
- Tension & compression
- Small size
- Environmentally sealed



STANDARD CONFIGURATION

5 ft. (1.5m) Integral Cable

OPTIONS

Extra Cable Length
Submersible

ACCESSORIES

Instrumentation

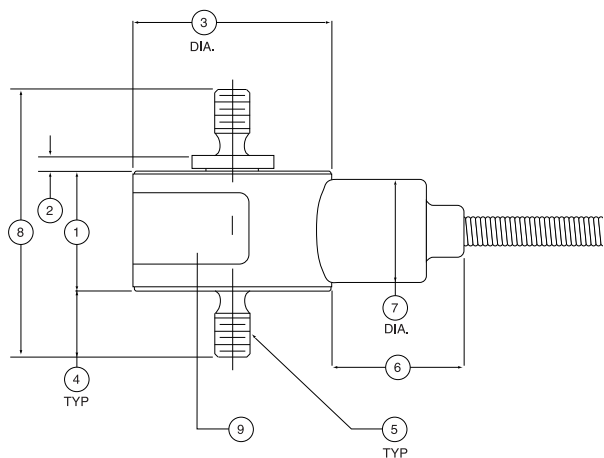
DIMENSIONS

See Drawing	CAPACITY					
	5, 10 lbf 22, 45 N		25, 50, 100 lbf 110, 220, 450 N		250, 500 lbf 1100, 2200 N	
	inch	mm	inch	mm	inch	mm
(1)	0.45	11.4	0.52	13.2	0.53	13.4
(2)	0.06	1.5	0.03	0.8	0.03	0.8
(3)	0.75	19.1	1.00	25.4	1.00	25.4
(4)	0.25	6.4	0.25	6.4	0.38	9.7
(5)	6-32 UNC M4x0.7		10-32 UNF M5x0.8		1/4-28 UNF M6x1	
(6)	0.50	12.7	0.50	12.7	0.50	12.7
(7)	0.39	9.9	0.39	9.9	0.39	9.9
(8)	1.01	25.7	1.05	26.7	1.32	33.5
(9)	label		label		label	

Deflection @ RO - inch (mm)						
5	10	25	50	100	250	500
0.0012 (0.030)	0.0010 (0.025)	0.0014 (0.036)	0.0010 (0.025)	0.0007 (0.018)	0.0026 (0.066)	0.0025 (0.064)

SPECIFICATIONS

ACCURACY - (MAX ERROR)	
Nonlinearity-% FS	±0.15
Hysteresis-% FS	±0.15
Nonrepeatability-% RO	±0.05
Creep, in 20 min-%	±0.05
TEMPERATURE	
Compensated Range-°F	15 to 115
Compensated Range-°C	-10 to 45
Operating Range-°F	-65 to 250
Operating Range-°C	-54 to 121
Effect on Output-%/°F - MAX	±0.002
Effect on Zero-% RO/°F - MAX	±0.005
ELECTRICAL	
Rated Output-mV/V (Nominal)	2.0
Zero Balance-%RO	±2.0
Bridge Resistance-Ohm (Nominal)	350
Excitation Voltage-MAX	12.0 VDC
Insulation Resistance-Megohm	> 5000
MECHANICAL	
Calibration	T & C
Safe Overload-% CAP	
5, 10 lbf (22, 45 N)	150
25-500 lbf (110-2200 N)	150
Cable length	5 ft. (1.5m)
Weight	0.05 - 0.12 (lb) 22.7 - 54.4 (g)



WMC Mini 5-500 lbf
4/6/12

Model WMC Miniature Sealed Stainless Steel Load Cell Capacities 1K-10K lbf (4500-45000 N)

- Proprietary Interface temperature compensated strain gages
- Tension & compression
- Small size
- Environmentally sealed



STANDARD CONFIGURATION

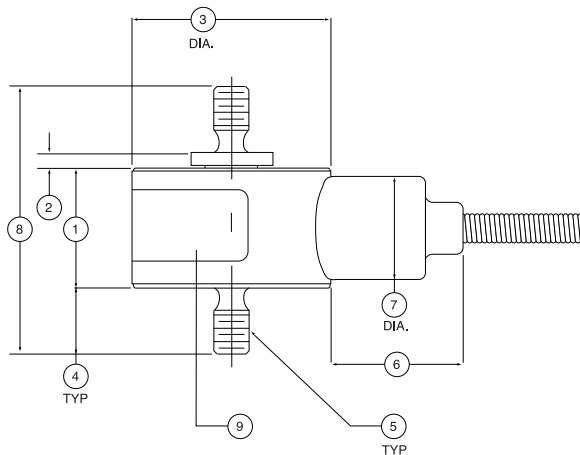
5 ft. (1.5m) Integral Cable

OPTIONS

Extra Cable Length

ACCESSORIES

Instrumentation



SPECIFICATIONS

ACCURACY – (MAX ERROR)	
Nonlinearity-% FS	±0.20
Hysteresis-% FS	±0.20
Nonrepeatability-% RO	±0.05
Creep, in 20 min-%	±0.05
TEMPERATURE	
Compensated Range-°F	15 to 115
Compensated Range-°C	-10 to 45
Operating Range-°F	-65 to 250
Operating Range-°C	-54 to 121
Effect on Output-%/°F – MAX	±0.002
Effect on Zero-% RO/°F – MAX	±0.005
ELECTRICAL	
Rated Output-mV/V (Nominal)	2.0
Zero Balance-%RO	±2.0
Bridge Resistance-Ohm (Nominal)	350
Excitation Voltage-MAX	15.0 VDC
Insulation Resistance-Megohm	> 5000
MECHANICAL	
Calibration	T & C
Safe Overload-% CAP	150
Cable length	5 ft. (1.5m)
Weight	0.13-0.50 (lb) 59.0-226.8 (g)

DIMENSIONS

See Drawing	CAPACITY							
	1K lbf (4.5 kN)		2K, 3K lbf (9, 13 kN)		5K lbf (22 kN)		7.5K, 10K lbf (33, 45 kN)	
	inch	mm	inch	mm	inch	mm	inch	mm
(1)	0.53	13.4	0.72	18.3	0.94	23.9	1.09	27.7
(2)	0.03	0.8	0.03	0.8	0.03	0.8	0.03	0.8
(3)	1.00	25.4	1.00	25.4	1.25	31.8	1.38	34.9
(4)	0.38	9.7	0.50	12.7	0.63	16.0	0.88	22.4
(5)	0.250-28 UNF M6x1		0.375-24 UNF M10x1.5		0.500-20 UNF M12x1.75		0.750-16 UNF M16x2	
(6)	0.50	12.7	0.50	12.7	0.50	12.7	0.50	12.7
(7)	0.39	9.9	0.39	9.9	0.39	9.9	0.39	9.9
(8)	1.32	33.5	1.75	44.5	2.23	56.6	2.88	73.2
(9)	label		label		label		label	
Deflection @ RO	0.0022 in 0.056 mm		0.0020 in 0.051 mm		0.0017 in 0.043 mm		0.0016 in (7.5K) 0.041 mm	0.0015 in (10K) 0.038 mm

WMC Mini 1K-10K lbf
04/06/12

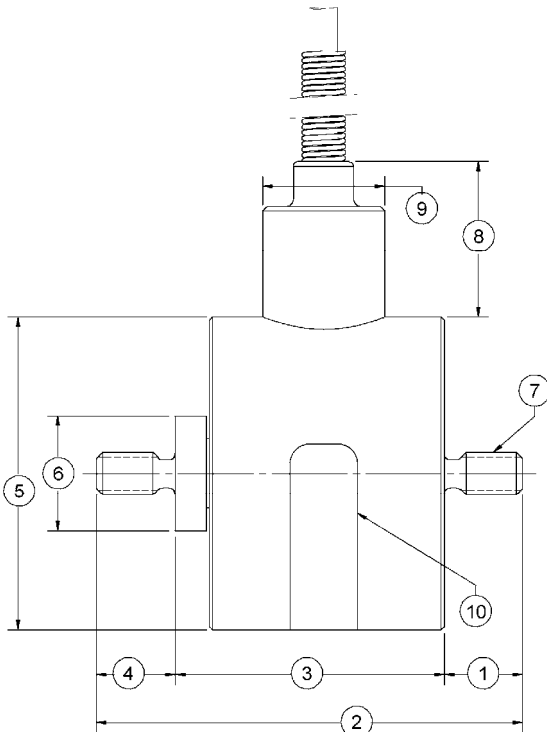
Model WMCP Stainless Steel Load Cell

- Capacities from 500 to 1000g
- Proprietary Interface temperature compensated in gages
- Tension and compression
- Small size
- Environmentally sealed
- Overload protected to 8x capacity



DIMENSIONS

See Drawing	CAPACITY	
	500g, 1000g	
	inch	mm
(1)	0.25	6.4
(2)	1.36	34.5
(3)	0.86	21.9
(4)	0.25	6.4
(5)	1.00	25.4
(6)	0.37	9.4
(7)	# 6 - 32 UNC-3A (Both Ends)	
(8)	0.50	12.7
(9)	0.39	9.9
(10)	Model, Capacity, Serial Number	



SPECIFICATIONS

CAPACITY	500g	1000g
ACCURACY - MAX		
Nonlinearity-% FS	±0.15	±0.15
Hysteresis-% FS	±0.15	±0.15
Nonrepeatability-% RO	±0.15	±0.1
Creep, in 20 min-%	±0.1	±0.05
TEMPERATURE		
Compensated Range-°F	50 to 150	50 to 150
Compensated Range-°C	10 to 66	10 to 66
Operating Range-°F	-65 to 250	-65 to 250
Operating Range-°C	-54 to 121	-54 to 121
Effect on Output-%/°F - MAX	±0.20	±0.20
Effect on Zero- % RO/°F - MAX	±2.00	±1.00
ELECTRICAL		
Rated Output-mV/V (nominal)	.75 ±0.15	1.50 ±0.30
Zero Balance-%RO	±2.0	±2.0
Bridge Resistance-Ohm (nominal)	350 ±3.5	350 ±3.5
Excitation Voltage-MAX	7 VDC or VAC	7 VDC or VAC
Insulation Resistance-Megohm	5000	5000
MECHANICAL		
Calibration	Tension	Tension
Safe Overload-% CAP	1600	800
Cable Length-ft	5	5
Deflection @ RO - inch	0.005	0.010
Weight-lb	0.2	0.2

STANDARD CONFIGURATION

5 ft. Integral Cable

OPTIONS

Extra Cable Length

ACCESSORIES

Instrumentation

WMCP
06/15/12

Model WMCFP Miniature Sealed Stainless Steel Load Cell

Why the Interface model WMC Miniature Sealed Stainless Steel Load Cell is the best in class:

- Capacities from 500 to 1000g
- Proprietary Interface temperature compensated strain gauges
- Tension and compression
- Environmentally sealed
- Overload protected to 8x capacity



STANDARD CONFIGURATION

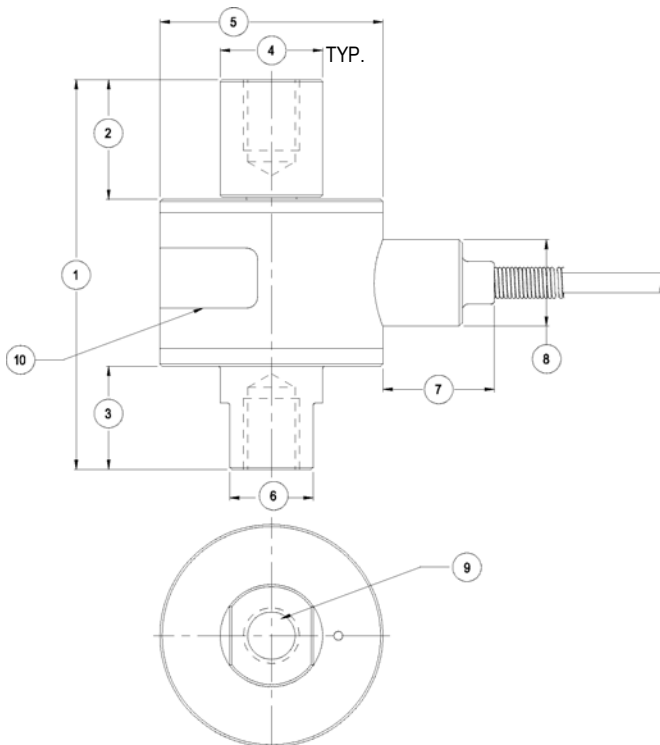
5 ft. Integral Cable

OPTIONS

Extra Cable Length

ACCESSORIES

Instrumentation



SPECIFICATIONS

ACCURACY – MAX	
Nonlinearity–% FS	±0.20
Hysteresis–% FS	±0.20
Nonrepeatability–% RO	±0.05
Creep, in 20 min–%	±0.05
TEMPERATURE	
Compensated Range–°F	15 to 115
Compensated Range–°C	–10 to 45
Operating Range–°F	–65 to 250
Operating Range–°C	–54 to 121
Effect on Output–%/°F – MAX	±0.002
Effect on Zero– % RO/°F – MAX	±0.005
ELECTRICAL	
Rated Output–mV/V (nominal)	2.0
Zero Balance–%RO	±2.0
Bridge Resistance–Ohm (nominal)	350
Excitation Voltage–MAX	15 VDC
Insulation Resistance–Megohm	>5000
MECHANICAL	
Calibration	Tension
Safe Overload–% CAP	800
Cable Length–ft	5
Deflection @ RO - inch	0.0005 (500g) 0.0010 (1000g)
Weight–lb	0.2

DIMENSIONS

See Drawing	CAPACITY	
	500g, 1000g	
	inch	mm
(1)	1.75	44.5
(2)	0.52	13.2
(3)	0.52	13.2
(4)	0.46	11.7
(5)	1.00	25.4
(6)	0.38	9.5
(7)	0.50	12.7
(8)	0.39	9.9
(9)	0.250-28 UNF X 0.32 Deep	
(10)	Model, Capacity, Serial Number	

WMCFP
11/29/11

Model WMC Rod End Load Cell

- Proprietary Interface temperature compensated strain gages
- Environmentally sealed
- Stainless steel construction
- Low deflection
- Tension & Compression



STANDARD CONFIGURATION

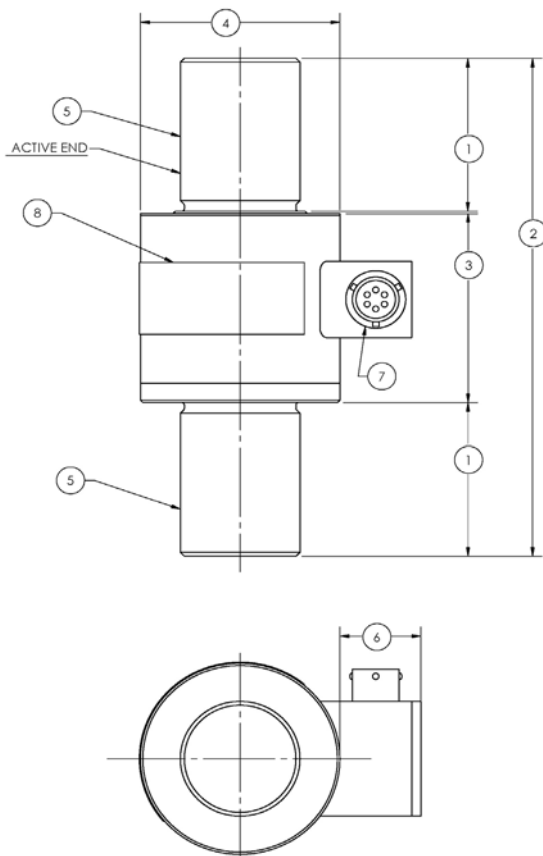
PTWIH-10-6P Connector

OPTIONS

- Integral Cable
- Standardized Output Amplifier

ACCESSORIES

Instrumentation



SPECIFICATIONS

ACCURACY - MAX	15K,20K,30K,50K 90, 130, 220 (kN)	100K 450 (kN)	200K 900 (kN)
Nonlinearity-% FS	±0.10	±0.15	±0.20
Hysteresis-% FS	±0.10	±0.15	±0.20
Nonrepeatability-% RO	±0.05		
Creep, in 20 min-%	±0.05		
TEMPERATURE			
Compensated Range-°F	15 to 115		
Compensated Range-°C	-10 to 45		
Operating Range-°F	-65 to 250		
Operating Range-°C	-54 to 121		
Effect on Output-%/°F-MAX	±0.004	±0.005	±0.005
Effect on Output-%/°C-MAX	±0.0072	±0.009	±0.009
Effect on Zero- % RO/°F-MAX	±0.0025	±0.005	±0.005
Effect on Zero- % RO/°C-MAX	±0.0045	±0.009	±0.009
ELECTRICAL			
Rated Output-mV/V (nominal)	2.0		
Zero Balance-%RO	±1.0		
Bridge Resistance-Ohm (nominal)	350 ±3.5		
Excitation Voltage-MAX	15 VDC		
Insulation Resistance-Megohm	>5000		
MECHANICAL			
Calibration	T & C		
Safe Overload-% CAP	150		
Deflection @ RO	0.004(in) 0.10(mm)	0.004	0.004
Weight-lb	4(lb) 1.8(kg)	14	34.4

DIMENSIONS

See Drawing	CAPACITY					
	15K, 20K, 30K, 50K lbf 90, 130, 220 (kN)		100K lbf 450 (kN)		200K lbf 900 (kN)	
	inch	mm	inch	mm	inch	mm
(1)	2.00	50.8	3.00	76.20	4.00	101.60
(2)	6.5	165.1	10.00	254.00	13.00	330.20
(3)	2.47	62.7	3.97	100.84	4.97	126.24
(4)	2.5	63.5	3.50	88.90	4.47	113.54
(5)	1.5 - 12 UNF M36 X 4		2.50 - 12 UN M64 x 4		3.50 - 8 UN M90 x 4	
(6)	1.01	25.7	1.28	32.51	1.36	34.54
(7)	PTWIH-10-6P Connector					
(8)	label					